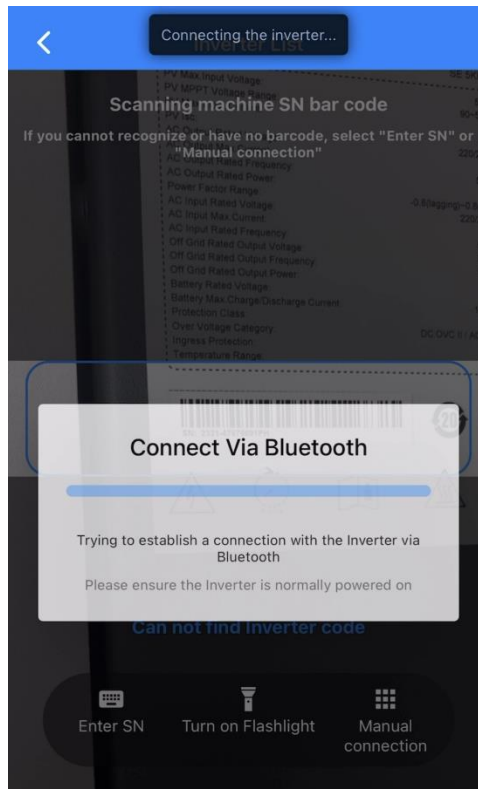


## How to setup the smart meter / CT and export limit

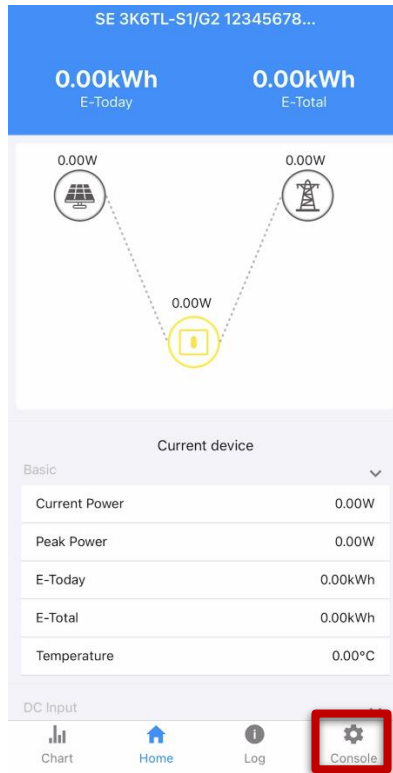
1. Download 'SolarHope' on your phone and click 'Bluetooth connection'



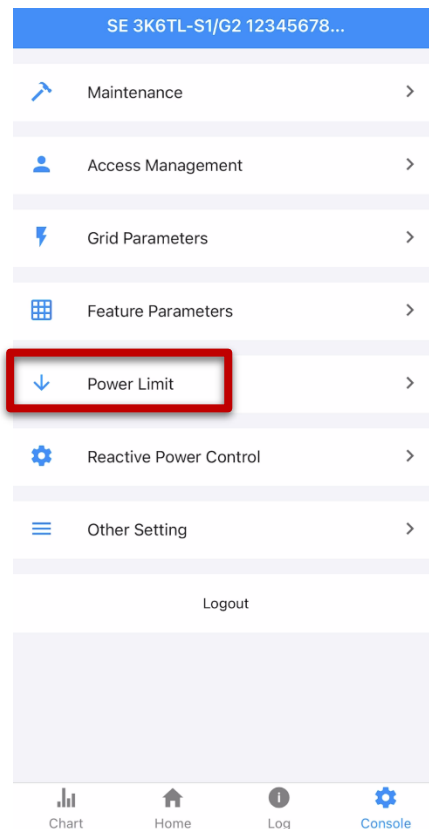
2. Scan the barcode located on the side of inverter and wait for the connection to be established



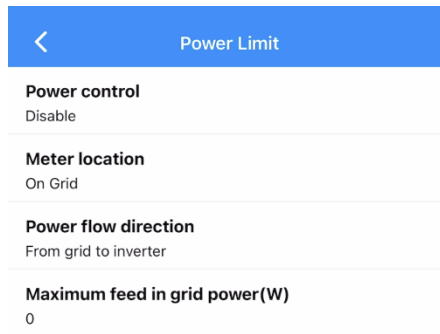
3. Click 'Console' located at bottom right



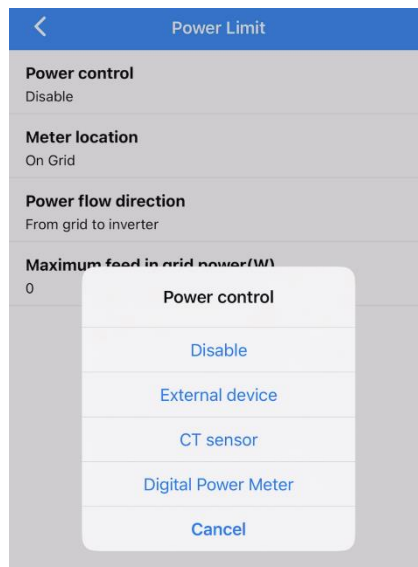
4. Click 'Power Limit'



5. Go through each option, start by 'Power control'



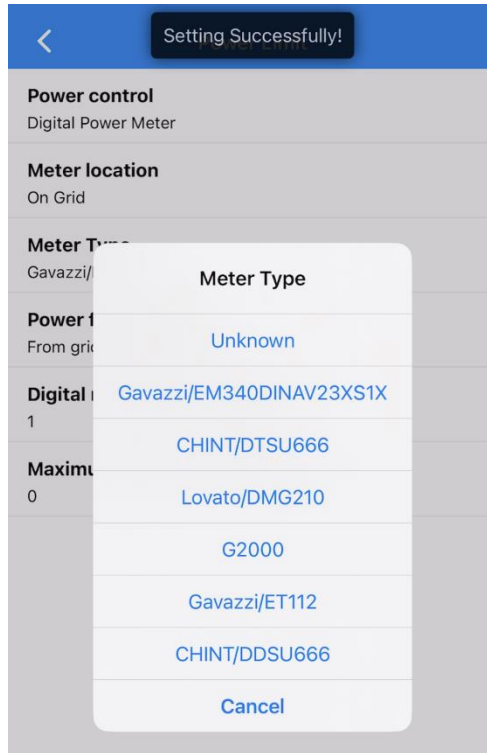
6. Select either CT sensor or Digital Power meter (Smart meter) depends on the site. As an example, we select digital power meter



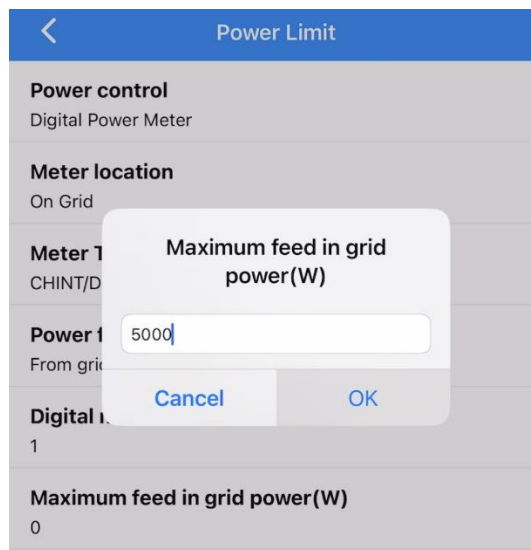
7. Meter location is usually 'On Grid' if you want to set up export limit and consumption monitoring



8. Select the meter type that is currently installed onsite



9. Power flow direction is by default 'rom grid to inverter'; Digital meter modbus address is by default ' 1 '. Set up the Maximum feed in grid power (export limit) as suggested by the local power distributor.



If CT is being installed onsite, the same commissioning process applies.

For any technical related questions, please email [service@primevolt.com.au](mailto:service@primevolt.com.au), or call our friendly tech support hotline on +61435182621